

Kilkenny County Council Estate Enhancement

Newsletter #1
OCTOBER 2015

2015 Estate Enhancement Grants



- Projects from around the County
- **Other Sources of Funding**
- Taking Pride in your estate





KILKENNY COUNTY COUNCIL

ESTATE MANAGEMENT

NEWSLETTER
OCTOBER 2015
Issue 1

Contents:

- 2015 Estate Enhancement Grants
- Activities from around the County
- Tidy Estates Awards
- Gardening Tips
- New Community Structures
- Estate Management Guide

Estate Management

Resident Associations

Kilkenny County Council recognise the importance of resident and tenant participation in estate management and are committed to working in partnership with residents and tenants on local authority estates to promote estate management in their estates.

Kilkenny County Council encourage residents to work together and represent the views of all residents where possible in order to make their living environment a better place to live”.

Get Involved

When you are allocated a dwelling by Kilkenny County Council you become more than just a tenant. You also become a member of the community in which you live.

Kilkenny County Council encourages you to become actively involved in your estate and is eager to hear your views and suggestions on how the physical appearance of your estate can be

improved.

The Estate Management Liaison Officer is available to assist and support residents in establishing estate based groups, attending meetings with the groups, where necessary, and providing or sourcing any training which the groups might feel beneficial.

The Estate Management Liaison Officer can also provide information on a number of grant funding schemes available through the County Council and other funding providers, keep an eye on this future newsletter as we will be highlighting funding schemes as they arise.

The stronger your resident association the better placed you be to attract resources that will assist you improve the physical appearance of your estate.



Kilkenny County Council

Estate Enhancement *Grant 2015*

Promotion of Estate Enhancement

Kilkenny County Council recognise the importance of resident and tenant participation in estate management and commit to work in partnership with residents and tenants on County Council estates to promote estate management in their estates and to offer assistance to resident associations in the development of an estate enhancement programme.

Basic Conditions

To qualify for assistance under the Estate Management Grant Scheme, applications must be submitted on behalf of an established resident association and proposed projects/activities must be deemed to enhance the appearance of your estate.

Selection process will include active assessment by Kilkenny

County Council on status of your committee.

Please be aware that grant applications will only be considered in one category i.e either Amenity Grant or Estate Management Grant

Criteria for selection of projects may be based on the following

Ability of the resident association to part fund the project – (voluntary hours may be assigned a monetary value and used as part funding).

Depending on the volume of applications, an amount may be applied to the maximum grant.

Type Of Projects Or Activities that will qualify for funding

Nature Pack – peat free potting compost, gardening tools (spade, rake, hoe etc, gardening gloves, native plants, native seeds, hanging baskets, planters etc)

Lawnmower or strimmer (once off funding)

The application should be accompanied by the following, where applicable:

(1) Quotes in respect of the cost of works and/or project and

(2) Details of the extent of works/project.

For any further queries please contact

Lisa Bourke on 056-7794931. Please note that recipients of grants may be listed on the Kilkenny County Council web-page.



WHAT TYPES OF PROJECTS QUALIFY FOR ESTATE ENHANCEMENT FUNDING

THE KILKENNY COUNTY COUNCIL ESTATE ENHANCEMENT GRANT ALLOWS RESIDENT ASSOCIATIONS TO CARRY OUT WORKS THAT WILL ADD TO THE OVERALL APPEARANCE OF THE ESTATE AND IMMEDIATE SURROUNDS.

Nature Pack – peat free potting compost, gardening tools (spade, rake, hoe etc, gardening gloves, native plants, native seeds, hanging baskets, planters etc)

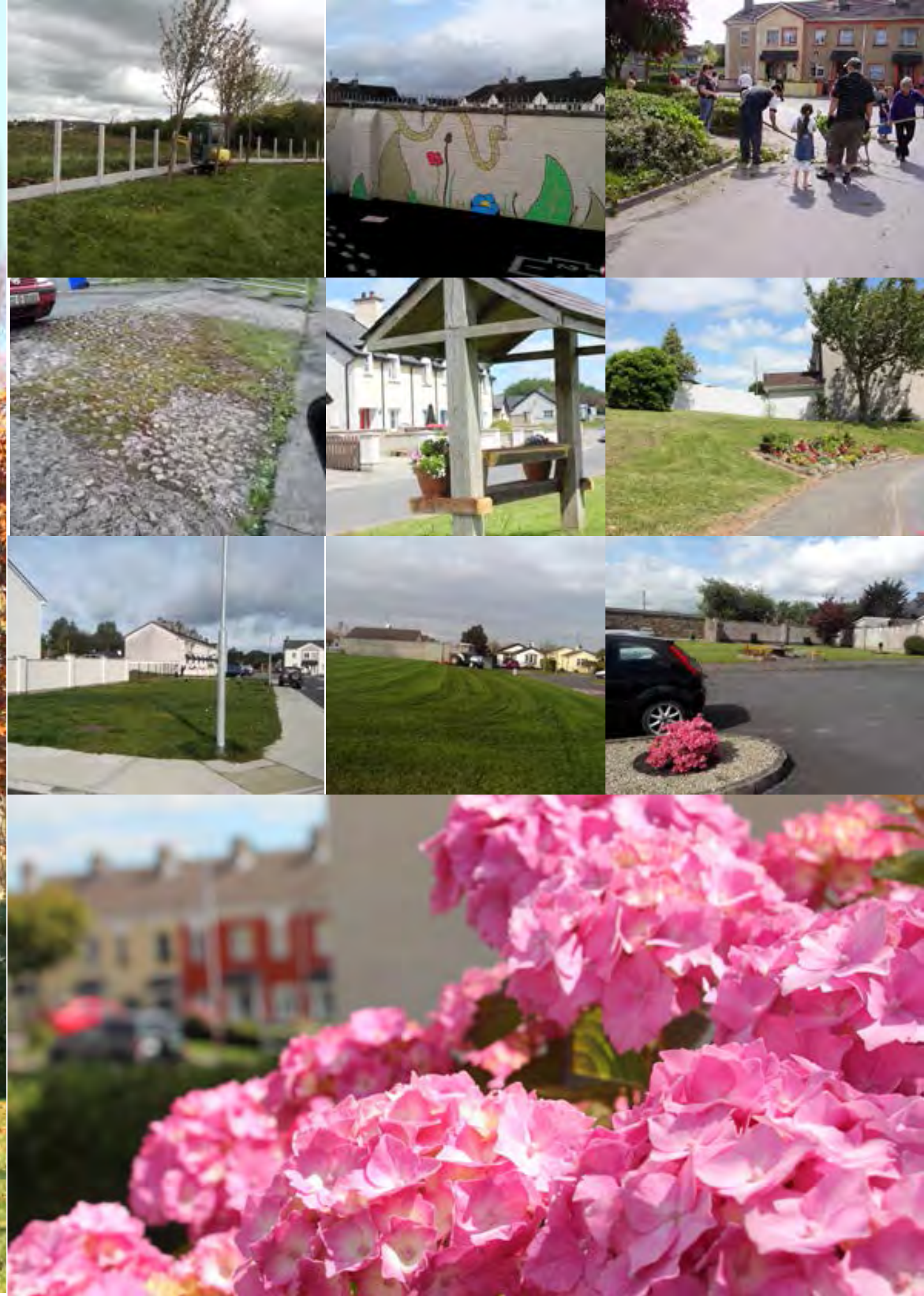
GRANT

EXAMPLES INCLUDE THE PURCHASE OF RELEVANT EQUIPMENT, CONTRACTING OF LANDSCAPER TO MAINTAIN GREEN AREAS, MAINTENANCE AND PURCHASE OF LAWN MOWERS AND FUEL FOR LAWNMOWERS, PURCHASE OF SHRUBS, FLOWERS AND TREES, PURCHASE OF PAINT, GARDENING TOOLS, HANGING BASKETS, PLANTERS ETC.

INSURANCE

ALL RESIDENT ASSOCIATIONS MUST HAVE RELEVANT INSURANCE AND THIS COST WILL BE COVERED BY KILKENNY COUNTY COUNCIL. AREAS COVERED UNDER THE INSURANCE WILL COVER GENERAL ESTATE ENHANCEMENT ACTIVITIES, ONE BARBECUE AND ONE FUN DAY PER ESTATE.

NOTE; THIS INSURANCE COST WILL NOT COVER THE COST OF RIDE ON LAWNMOWERS. IF YOUR ESTATE USES A RIDE-ON LAWNMOWER YOU MUST CONTACT KILKENNY COUNTY COUNCIL AND AN ADDITIONAL POLICY WILL HAVE TO BE ARRANGED.?



Tidy Estate Awards

How to get involved?

The aim of Kilkenny County Council Tidy Estates competition is to encourage residents to take an active role in improving the physical appearance of their estate.

This competition allows active and new resident associations across the City and County to develop an estate management and environmental programme of work for their estates and to identify achievable goals.

The initiative is actively supported by Kilkenny County Council and judging normally takes place between August and September.

There are three entrance categories in County Council areas. Estates are categorized by the number of dwellings, and prizes are awarded to the following categories;

- Larger,
- Medium and
- Smaller sized estates.

Basic Conditions:

Applications are assessed under the following criteria:

Overall developmental approach, litter control, litter awareness projects, general appearance and presentation of dwellings and open spaces, recycling initiatives, wildlife and general environmental projects, community projects including links with the Tidy Towns Committee and new innovative projects

2016 Application forms for the Tidy Estate Competition will be available on the County Council website at www.kilkennycoco.ie in April 2016.

For any further queries please contact Ronan Ryan 056 7794928 email; ronan.ryan@kilkennycoco.ie or Lisa Bourke, on 056-7794931 or email; lisa.bourke@kilkennycoco.ie



Winners of the 2013 Estate Management Tidy Estates Awards



Winners of the 2014 Estate Management Tidy Estates Awards

Taking pride.....

Projects from around the county



Landscaping tips

maintaining grass and green spaces.....

Lawns are wrongly regarded as a low maintenance they can be low maintenance, but not if you want them to look good.

What follows is a range of tips and advice on how to maintain your green space in tip top condition.

Mow regularly Many problems can occur due to the grass being left too long between cuts and then being cut too short.

If at all possible cut grass as soon as it is about half an inch (12 mm) longer than the length you are aiming for. For a general purpose lawn it is best to keep it to a length of about 1½ in (35

mm) during Spring and Autumn and reduced to approx 1 in (25 mm) in Summer.

A fine quality lawn whose main purpose in life is to be admired rather than walked on can be trimmed to ¾ in (20 mm) in Spring and Autumn and as short as ½ in (15 mm) in Summer.

Feeding

Lawns can be fed as soon as they start actively growing in early Spring i.e. late March to April to maintain vigour and to ensure grasses leave no room for weeds and moss.

Use a Spring/Summer lawn food. If you are removing the

clippings from your lawn then it is particularly important to feed throughout the growing season every six to eight weeks.

Autumn feed must be with a specific Autumn lawn food that is high in phosphates and potash and low in nitrogen to encourage strong root growth rather than leaf growth.

Raking (scarifying) It is essential to scarify the lawn. This just means raking the grass really vigorously to get rid of all the dead matter that builds up.

Use a spring-tine rake for smaller areas or invest in a mechanical scarifier.

Green fingers

Dealing with weeds in the lawn

An area of rough grass can rapidly become a pleasing lawn and the time and effort required after the initial effort depends largely on whether you can tolerate clover, daisies and buttercups in your lawn.

Although buttercups are attractive they are so invasive it is best to get rid of them. The regular ap-

plication of a good weed and feed mixture is by far the best way to get rid of daisies, buttercups and clover. It is entirely possible to have a modestly acceptable lawn by doing no more than mowing regularly, collecting the grass, and feeding in spring and autumn.

However such a lawn is likely to slowly deteriorate and all areas of grass benefit from additional maintenance as described above.

Other Sources of Funding

Grants for Anti-Litter & Anti-Graffiti Awareness Community Initiatives 2015

Do you have a project or initiative that will positively contribute to increasing awareness of the impact of litter or graffiti in Kilken-ny? Kilken-ny County Council will cover 70% of the total cost of the proposed project with the remainder met by the applicant.

Eligible Applicants Schools, youth clubs, environmental groups, voluntary groups, tidy town groups & resident associations.

Eligible Projects Projects or community activities eligible are those that promote anti litter and anti-graffiti behaviours such as clean ups and community art workshops to combat graffiti Purchasing of paint, planting of wall creepers to prevent or remove graffiti in public areas is eligible under this grant scheme. Litter picking supplies, such as bags, gloves, hi-vis

vests and disposal costs of rubbish collected from community clean ups from public lands are also eligible.

Check out the Kilken-ny County Council Web-site for further details www.kilkennycoco.ie

Local Agenda 21 Environmental partnership Fund

The Local Agenda 21 Environmental Partnership Fund promotes sustainable development by assisting small scale environmental projects at local level which involve partnership arrangements between local authorities and local community groups, schools and environmental NGOs. 50% of the funding is provided by the Department of the Environment, Heritage and Local Government and the further 50% is provided by Kilken-ny County Council. Sample Projects Include Community Development DVD Composting Workshops Environmental Education e.g. Green schools committee could do an

‘Ecological Footprint’ of the local community and address ways to reduce this or develop or extend a wildlife garden

Community groups/ Tidy Towns could come up with waste prevention measures for their Local Community

Community groups/ Tidy Towns could develop/establish a ‘Native Tree Nursery’

A local organisation could develop an environmental awareness programme

Farming groups could produce a booklet/web-site with farm waste questions answered

For more information on the above grants contact the Environmental Section Kilken-ny County Council

Further information and application forms contact the Environmental Awareness Officer, Kilken-ny County Council, County Hall, John Str, Kilken-ny City.

056-7794470

Plan for your estate

Kilkenny County Council encourage all resident associations to plan for estate management enhancement works.

Estate Enhancement Plans

Kilkenny County Council recognise the importance of resident and tenant participation in estate management and are committed to working in partnership with residents and tenants to promote estate enhancement projects in their estates. Kilkenny County Council will assist residents in developing estate enhancement plans.

If you have estate enhancement ideas please contact the Estate Management Liaison Officer to discuss





TENANT HANDBOOK

The purpose of the Tenant's Handbook is to outline tenants responsibilities and to outline the terms of the agreement that tenants have entered into with Kilkenny County Council. This handbook will be a reference to assist you in making your neighbourhood an attractive and safe place in which to live in harmony with your family and neighbours. A new tenants handbook will be published to the Kilkenny County Council Website shortly. For a copy of the existing Tenants Handbook contact Kilkenny County Council at 056 7794000

New Community Structures

Get your voice heard

The PPN is a new framework for public engagement and participation. The PPN will be the main link through which the local authority connects with the community, social inclusion and environmental sectors.

The aim of these structures is to facilitate and enable public organisations operating within the wider community to articulate and give voice to a diverse range of views, issues and interests within the local government system.

The PPN:

Facilitates the participation and representation of communities in a fair, equitable and transparent manner through the environmental, social inclusion & community sectors on decision making bodies

Strengthens the capacity of the environmental, social inclusion, community groupings to contribute positively to the community in which they reside/participate

Provides information relevant to the environmental, social inclusion & community sector and acts as a hub around which information is distributed and received.

Public Participation Network (PPN) Structures

Public Participation Network (PPN) Structure

The Public Participation Network (PPN) will be organised at two levels:

At County level with three pillars: Environment, Social Inclusion,

& Community. At Municipal District level - Municipal Districts form a new tier of local governance at sub-county level. Each county council is to comprise a number of municipal districts; Kilkenny has four MD's.

At Municipal District level Each PPN will have:

A County Plenary* at County level which deals with County level issues

The plenary will bring together all the PPN groups to give feedback, highlight issues and present the results of their work.

A Municipal District Plenary* in each Municipal District (MD) which deals with issues at a municipal level.

Linkage Groups will form to deal with specific issues and support nominees in their role; they will form part of the accountability and feedback mechanism for the community (task groups)

A secretariat at County level that acts as a facilitation, administration and communication mechanism

Criteria for membership of the Kilkenny Public Participation Network (PPN)1

1) Groups must be active in County Kilkenny, and have aims and objectives which are compatible with the principles of the PPN, and be not for profit.

2) Groups must be in existence at least six months prior to affiliation, and must have a minimum mem

bership of five and be open to new membership.

3) Any groups who register can only register once. The contact person for a group cannot register for multiple groups.

4) All organisations registered for the PPN should have an agreed set of rules and a working structure that informs the appropriate workings and structures for that organisation, which may differ across organisations. In most cases, this will likely be a constitution; terms of reference, a bank or credit union account, etc.

5) Political parties will not be able to affiliate.

6) Public representatives (Councillors, TDs, Senators, MEPS etc), or those who have held such office within the past 12 months may not participate in the PPN.

In addition, individuals who are declared as candidates for public representative office (Councillors, TDs, Senators, and MEPs etc) must step aside from all PPN roles for the duration of their declared candidacy.

7) Groups who have representational rights through the national pillars, local authorities, local development or other mechanisms may affiliate to and participate in the MD and county PPNs but should not participate in the election of representatives to Local Authority Committees

Examples of types of groups under each pillar:

Community Pillar PPN

Residents groups Self-help groups
Community councils Issue based groups
Youth groups Community Associations
Sporting/ leisure clubs/groups Voluntary campaign groups
Arts groups Broad based Service provision groups
Active retirement groups Playground Associations
Festival groups

Social Inclusion Pillar

Disability groups Traveller Groups
Ethnic minority groups Women's Groups
Family Support group (FRC's) Literacy Groups
Older peoples groups Social Justice Groups
Groups promoting equality LGBT Groups
Youth service and groups Children services and support groups
Mental health / suicide prevention groups
Drug and alcohol support Information groups
Rural isolation and disadvantage groups
Urban disadvantage groups

Environment Pillar

An Taisce Bat Conservation Ireland
Bee keeping Associations Bird watch Ireland
Friends of the Earth Green Schools
Green Campuses Green Communities
Butterfly Conservation Ireland CRANN
Forest Friends ECO UNESCO Feasta

New Community Structures

Additional Criteria for Environmental Pillar:

The primary objectives and activities of the organisation must be Environmental (i.e. ecological) protection and / or environmental sustainability.

Once off protest groups are not eligible

Groups dealing with the following are eligible:

Permanent protection of wildlife
Species specific care – protection/rehabilitation/reintroduction
Organic horticulture or education
Environmental education or protection
Environmental sustainability
Resource efficiency and recycling
Invasive alien species prevention/removal

Additional Criteria for Social Inclusion Pillar:

A working definition of a Social inclusion organisation is an organisation whose main activity centres on working to improve the life chances and opportunities of those who are marginalised in society, living in poverty or in unemployment using community development

approaches to build sustainable communities, where the values of equality and inclusion are promoted and human rights are respected. See also Social Inclusion statement agreed by local social inclusion

The primary objectives and activities must focus on poverty reduction, community development, equality and social justice issues.

The organisation must have activities in line with a social inclusion approach to community building and have those who experience poverty and social exclusion on its management /organisational structure.

Organisations who work to influence policy with regard to social inclusion are also eligible.

Such organisations include those who focus their work on vulnerable groups in society who experience social exclusion.

- Older people
- People who are unemployed or experiencing poverty
- Children/Youth
- Ethnic minorities including Travellers
- People with disabilities & their carers
- People living in isolation

Why your group should join- Network, share information, learn from other community and voluntary groups in your area or sector Create a sense of solidarity and collative action across the county Elect representatives to policy making boards and committees. Avail of free or low cost support and training in the county and get information on funding, grants and initiatives.

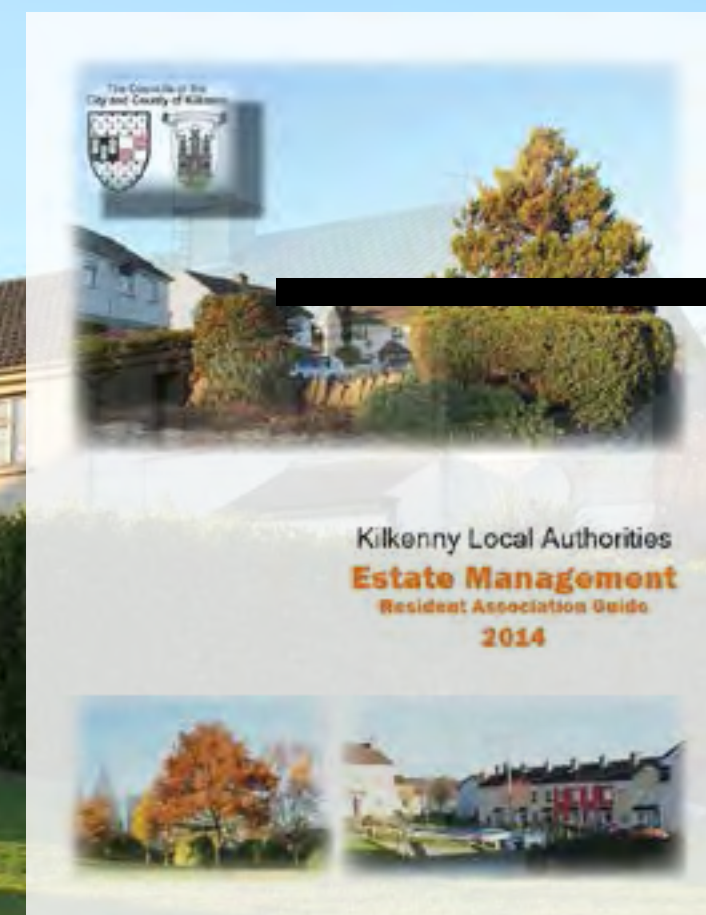




Get involved
with your local committee and
make your estate a better
place to live.

Key Steps

to setting up a
Residents Association



to download estate
management guide





**For more details
Please contact**

**Kilkenny County Council
Telephone: 056 7794000**