

Kilkenny County Council - Incremental Purchase Scheme

Six Newly Built Affordable Homes for Sale

Nos. 1 – 6, Hoban Park, Callan, Co. Kilkenny

Purchase Price: €230,431 - subject to discount (40%-60%) based on household income

Kilkenny County Council have 6 x 3 bed 2 storey semi detached A rated houses available as affordable housing for sale in Hoban Park, Callan. These houses are available for purchase at a discount, based on household income, to qualified candidates under the **Incremental Purchase Scheme**.



These homes form part of a 38 new A-rated energy efficient homes development and face directly onto Fair Green Lane - an established residential area close to Callan Town Centre.

The scheme was designed by Reddy Architecture and Urbanism and are bright and thoughtfully laid-out, with plenty of storage space throughout. Fixtures and fittings in the kitchen, utility and bathrooms are provided. Floor coverings provided in bathroom areas. Decorated in a neutral colour scheme throughout.

Each house comes with private garden space and driveway parking. Garden sizes vary.

Heating / Hot water provided via Air to Water Heat Pump System.

Accommodation: - Total Floor Area 105m²

Ground Floor:-	Lobby, Entrance Hall with understairs storage, Sitting Room, Kitchen, Utility, Downstairs WC
----------------	--

First Floor:-

Double Room, Twin Room, Single Room, Family Bathroom, Storage Press

Site Layout (Not to Scale)

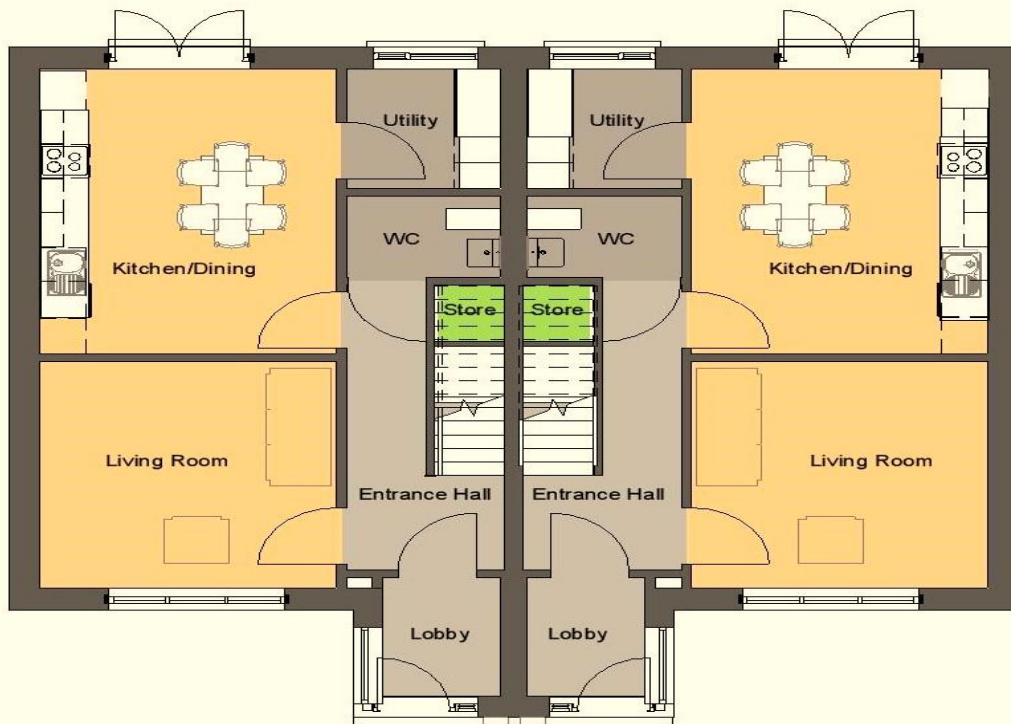


Location

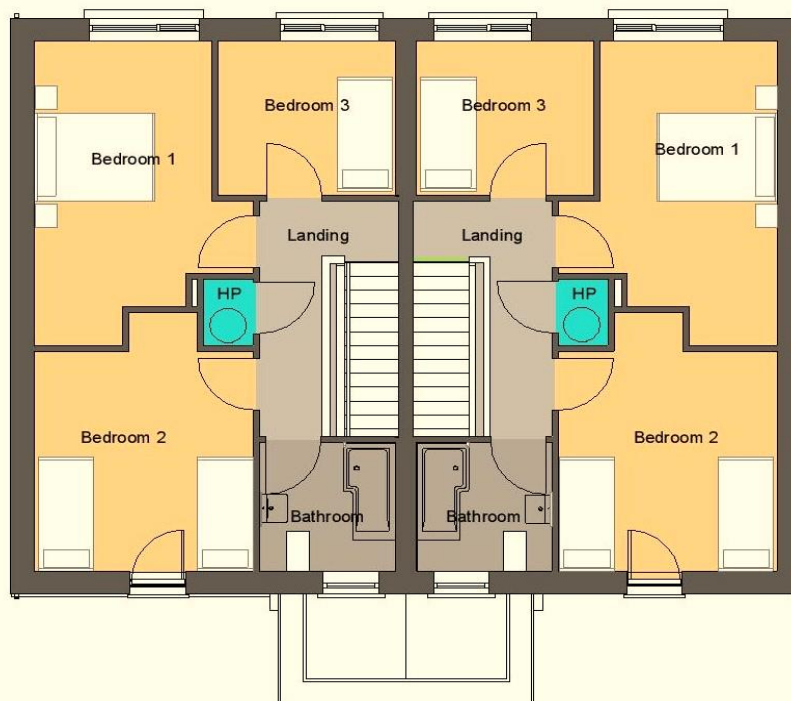


3D View

Total Floor Area 105m²



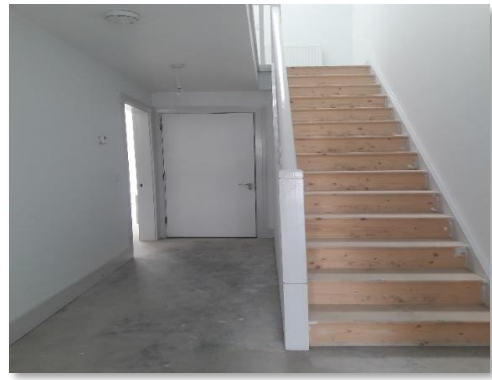
GROUND FLOOR PLAN



FIRST FLOOR PLAN



Kitchen



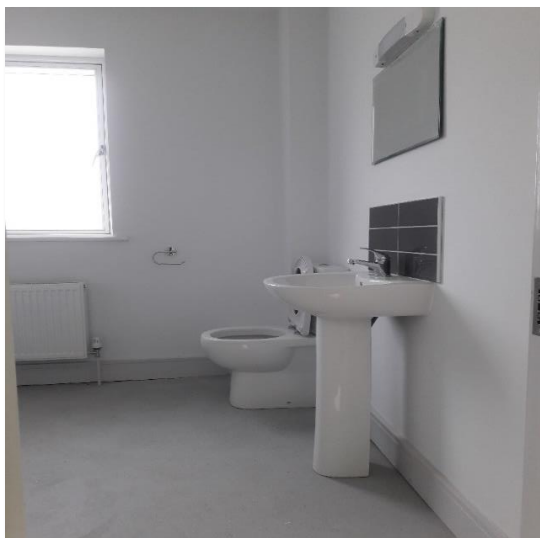
Entrance Hall



Utility



Entrance Lobby



Family Bathroom





Bedroom 1



Bedroom 2



Bedroom 3