

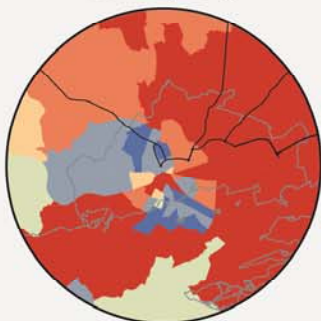
Boundary Review Committee

- Identity
- 19,131 Submissions
 - 99.85% opposed to a change
- No Cost Savings
- Recognise Waterford City as our Gateway
- History & Geography
- Population Growth

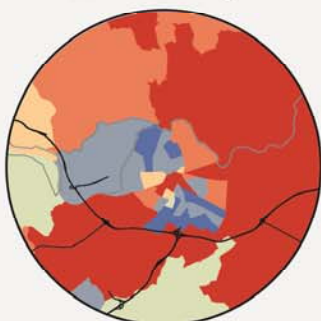
Population Change (%), 1991 to 2016

By Electoral Division (ED)

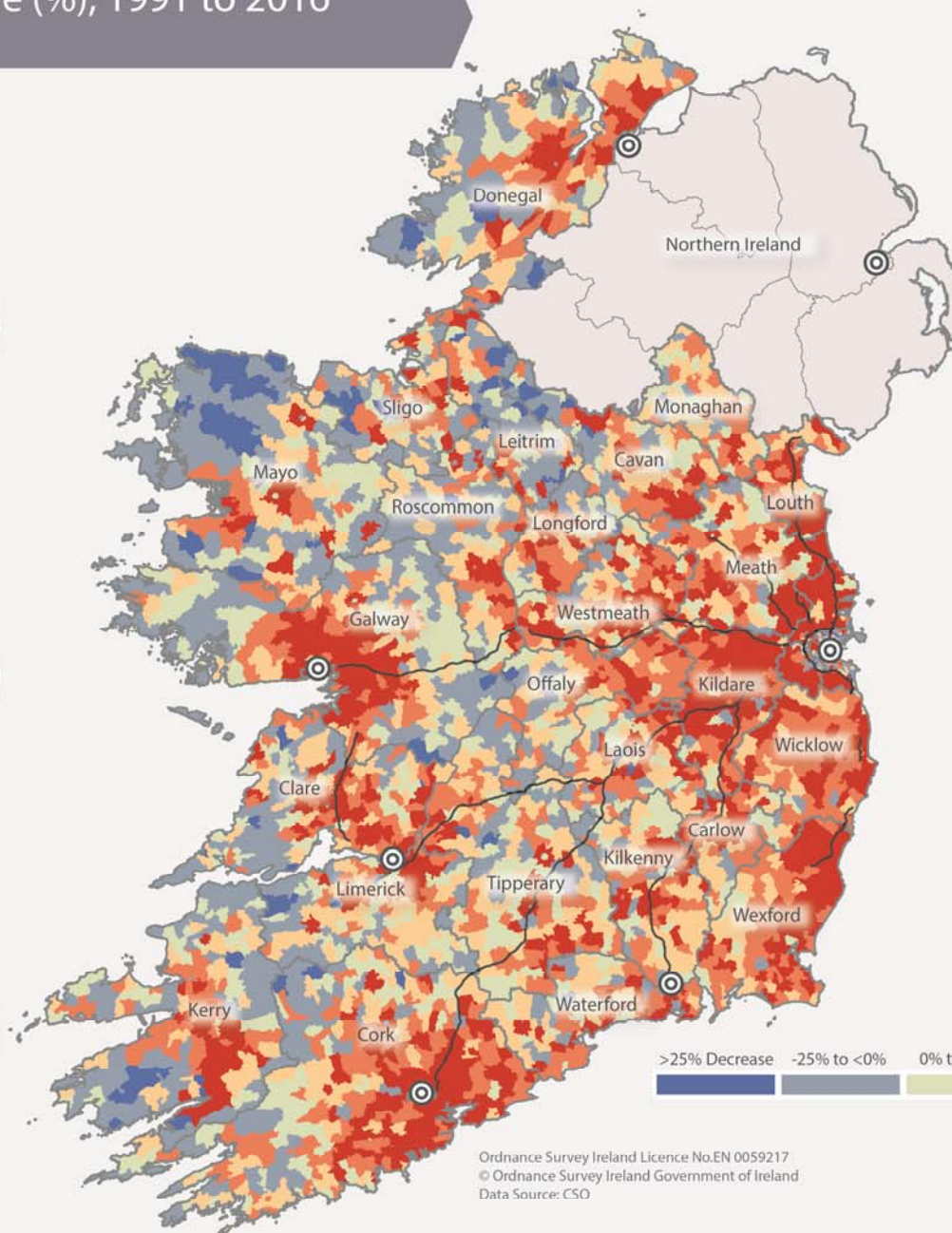
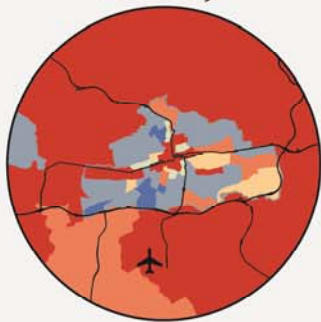
Galway City



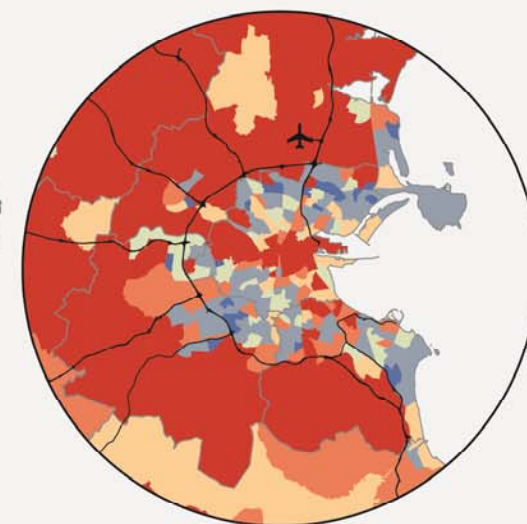
Limerick City



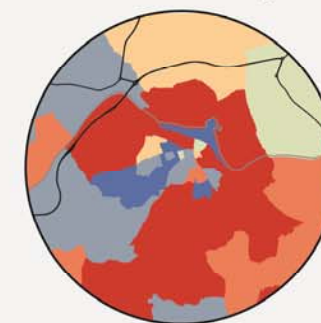
Cork City



Dublin City



Waterford City



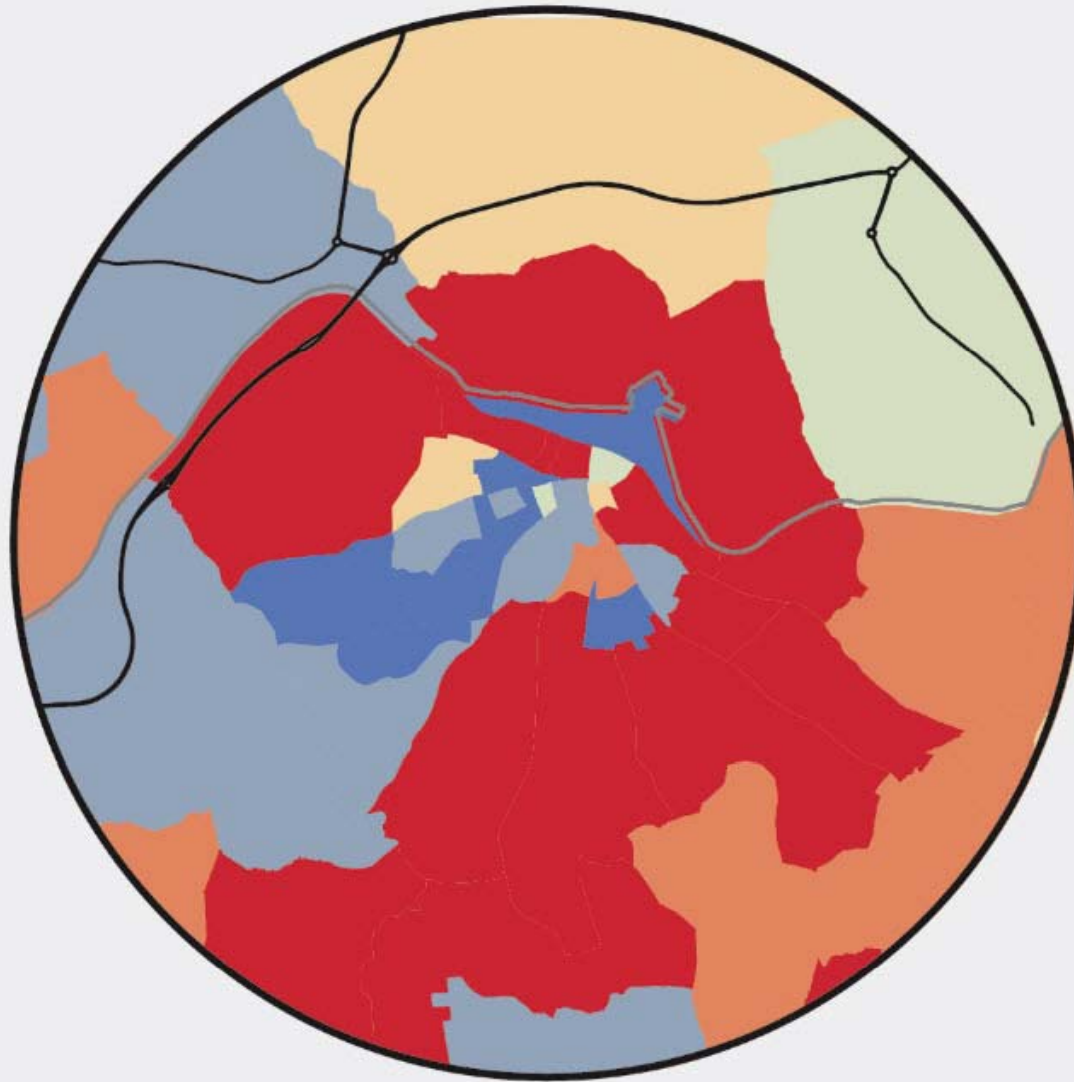
Legend



Ordnance Survey Ireland Licence No.EN 0059217
© Ordnance Survey Ireland Government of Ireland
Data Source: CSO



Waterford City



Consistency

- Athlone, Drogheda, Carlow
- Cooperation, Collaboration, Regional Approach

Inherent Rivalry

“ inherent rivalries too significant to render practicable in the medium to long term to favour a continuance of the existing boundary configuration ”

Cooperation

- Planning Land Use & Transportations Study (PLUTs)
- High Level of Engagement in
 - Technological University for the SE
 - Capital of Culture
 - Tall Ships 2005 & 2011
 - Waterford Main Drainage
 - N25 Waterford Bypass / M9
 - University Hospital

Implications for Kilkenny

- Deny 5,500 their identity
- Losing Ferrybank
- Splitting Kilmacow and Slieverue
- Compensation from an indebted council
- Closure of Area Office in Ferrybank
- Reduction of Political Representation (2)
- Reconfiguration of all Electoral Boundaries
- Loss of Regional Cohesion

Piltown Municipal District

- Joint Meetings with
 - Tramore & Waterford City West Electoral Area(8)
 - New Ross (2)
 - Carrick on Suir (3)
- Greenway
- Upgrade of N24
- North Quay
- Improved connectivity

TIDY TOWNS
COMMITTEE

PORT AN CHALAI DH

FERRYBANK

AN TAIRBHE AS
TARRAINGT LE CHÉILE



South East Region

- Household income - 89% of National Average
- 3rd Level Graduates - 6/8
- STEM related Graduates - 8/8
- IDA Jobs - 5/8
- Enterprise Ireland Jobs - 5/8

National Planning Framework

Vision:

What sort of place should Ireland be in 2040
and what do we need to achieve this?

National Planning Framework

- Ireland as a place
- Place-based aspect to public
- Connecting goals to places
- Place Making
- Social Connectedness & Well Being
- Community Cohesion
- Quality of life offer through place making
- Qualitative place making – vibrancy of places and place based leadership
- Authenticity and potential of places are of immense value
- Place based characteristics matter more than ever

National Planning Framework

- Implementation programmes developed on a

Assembly structure

- Strengthened legislative basis for local authority cooperation & planning
- Places must complement each other rather than compete

Where to Next?

- Local and Regional identity
- Firm commitment to cooperation
- Consistency with Athlone, Carlow, Drogheda
- Structured cooperation
- Agreed vision
- New Planning & Land Use Study (PLUTs)
- Joint Retail Strategy
- Service Delivery Plan for Waterford Environs
- Underpinned by legislation