

---

# Ireland 2040 Our Plan



NATIONAL PLANNING FRAMEWORK

---

**Liam McGree**  
**Assistant Director/Senior Planner**



## What is the National Planning Framework?

The National Planning Framework (NPF) or “*Ireland 2040 – Our Plan*” will be a successor to 2002 National Spatial Strategy.

It will set out the Government’s response to future national challenges, including:

- A population increase of around **1 million people**
- More than one fifth of Ireland’s total population being over 65
- More than **500,000 additional people at work**
- At least **500,000 extra homes** required close to employment and services
- Major environmental challenges such as protecting air and water quality, bio-diversity and a move away from dependence on fossil fuels

# National Planning Policy Hierarchy

## Planning Policy Hierarchy, Ireland 2017



## How will it differ from the National Spatial Strategy?

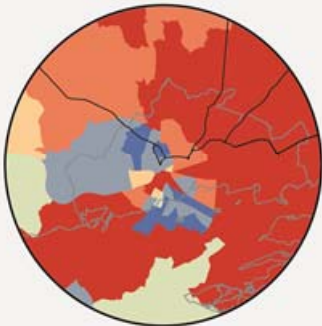
The National Planning Framework will:

- Have a statutory basis, approved by the Oireachtas
- Be a strategic framework to be supported by more detailed implementation plans at Departmental, Regional and Local level
- Be aligned with and supported by public and private investment
- Include an economic dimension, but not be solely based on economic considerations
- Include a particular focus on implementation and evaluation, with capacity for review
- Be supported by the development of three Regional Spatial and Economic Strategies (RSES) which will provide a greater level of focus around the high level strategic policies of the NPF.

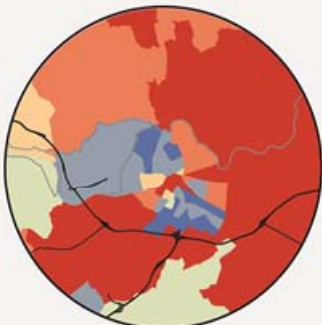
# Population Change (%), 1991 to 2016

By Electoral Division (ED)

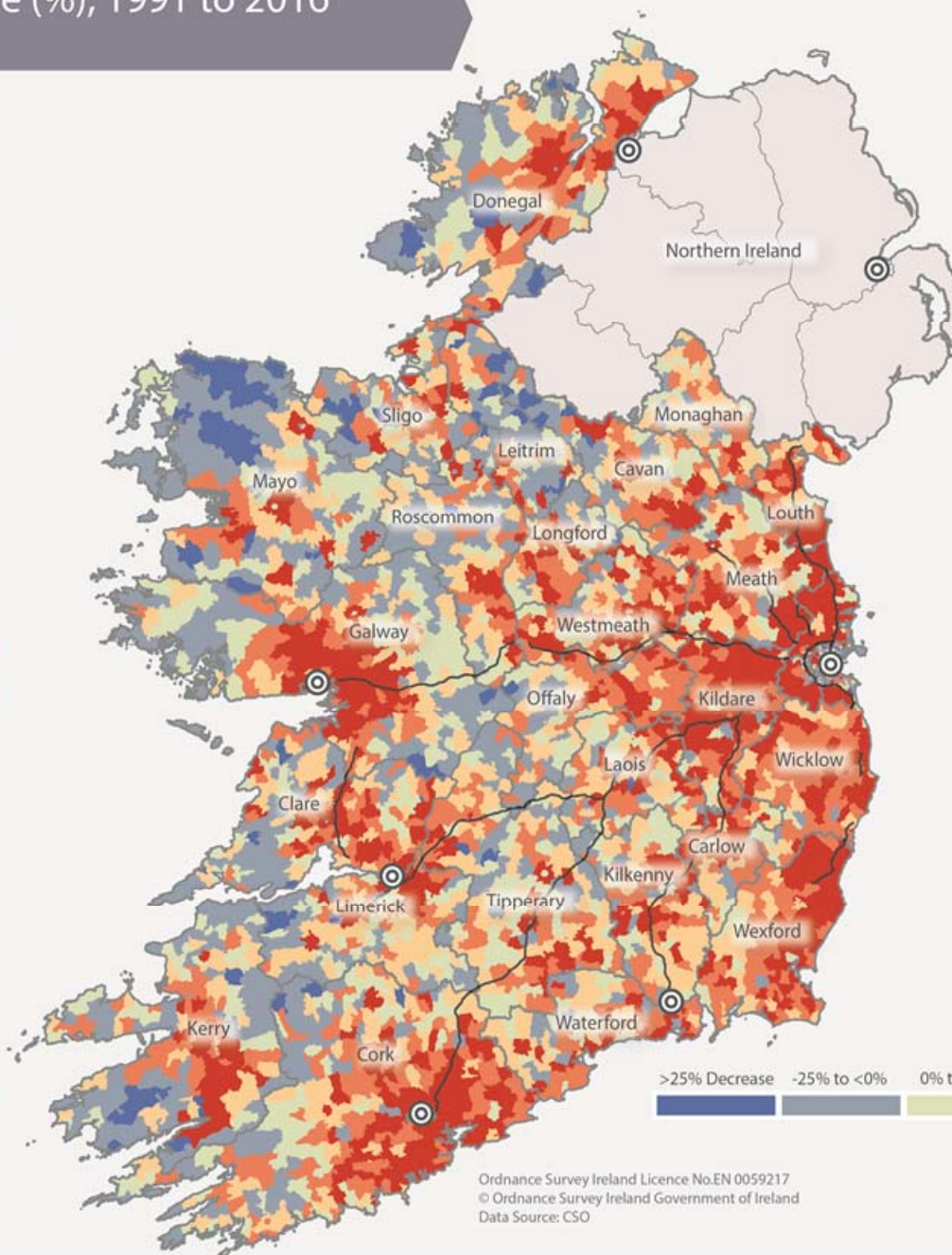
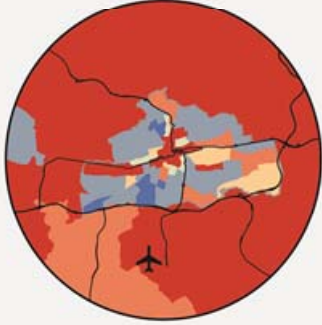
Galway City



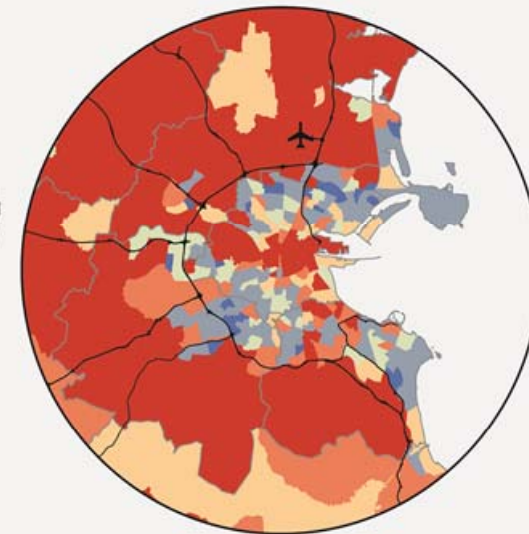
Limerick City



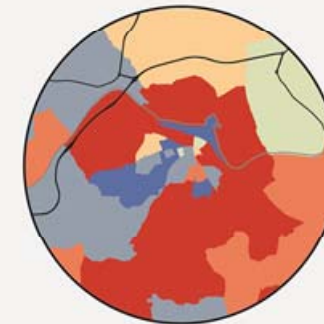
Cork City



Dublin City



Waterford City



## Legend

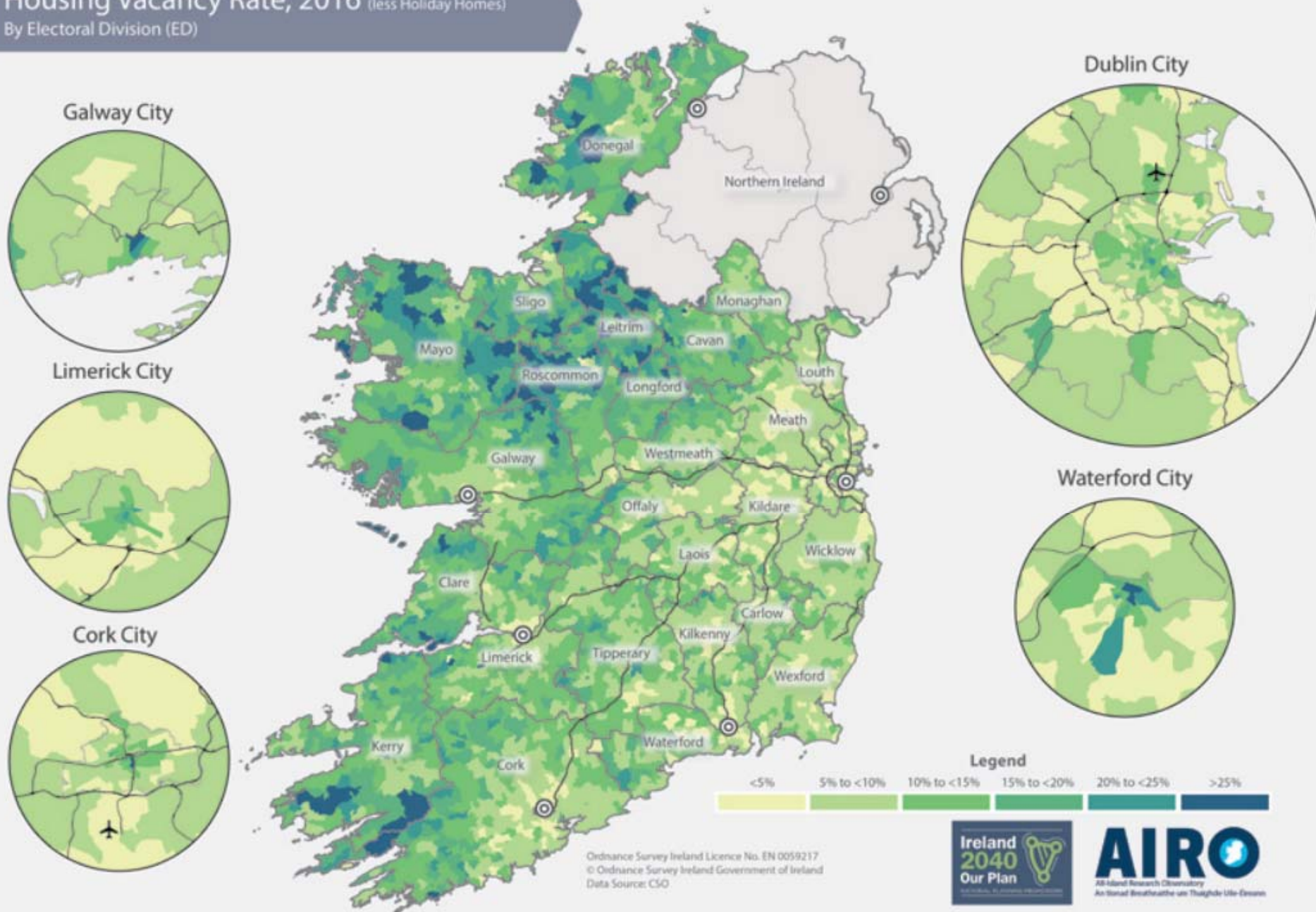


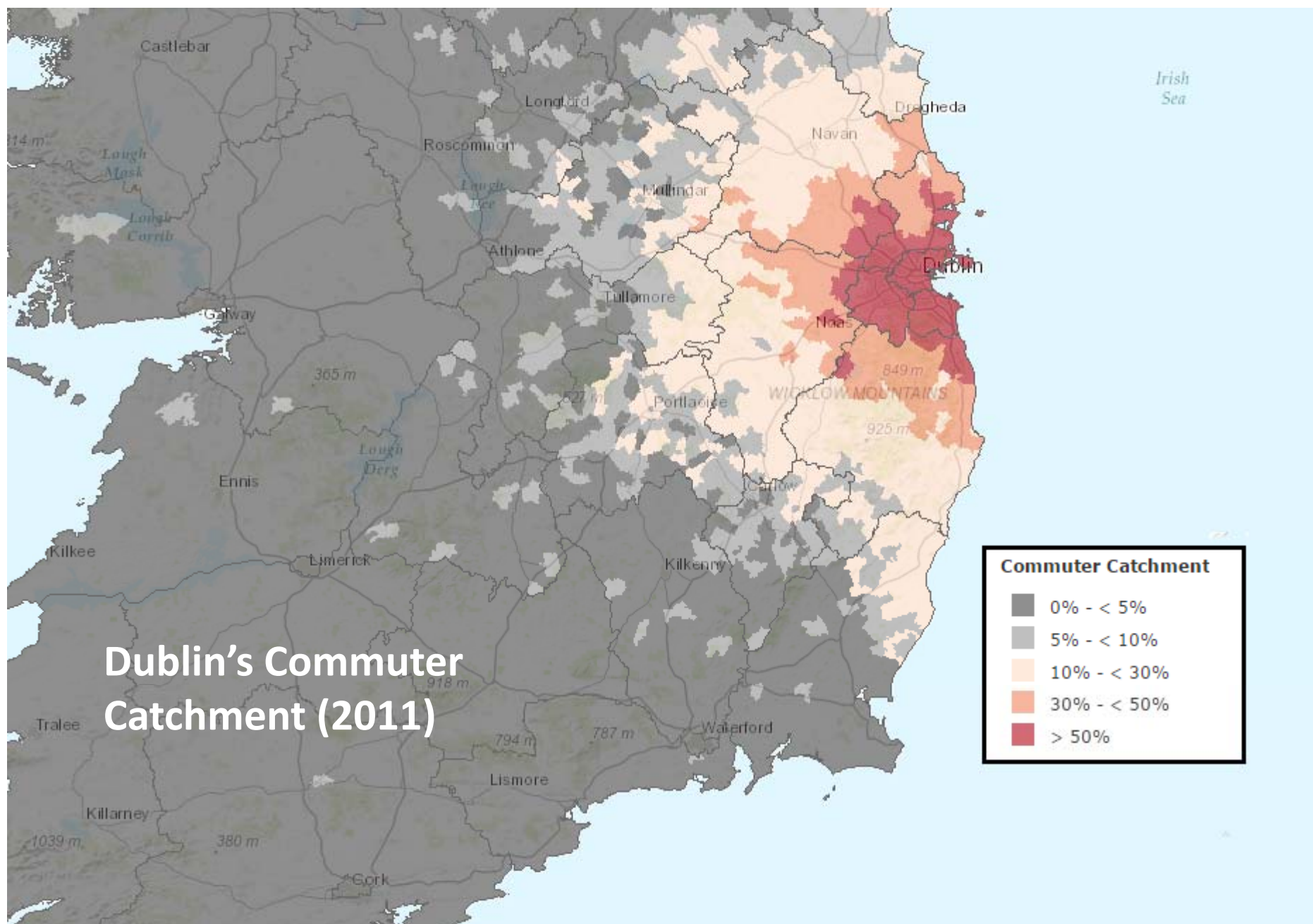
Ordnance Survey Ireland Licence No.EN 0059217  
© Ordnance Survey Ireland Government of Ireland  
Data Source: CSO



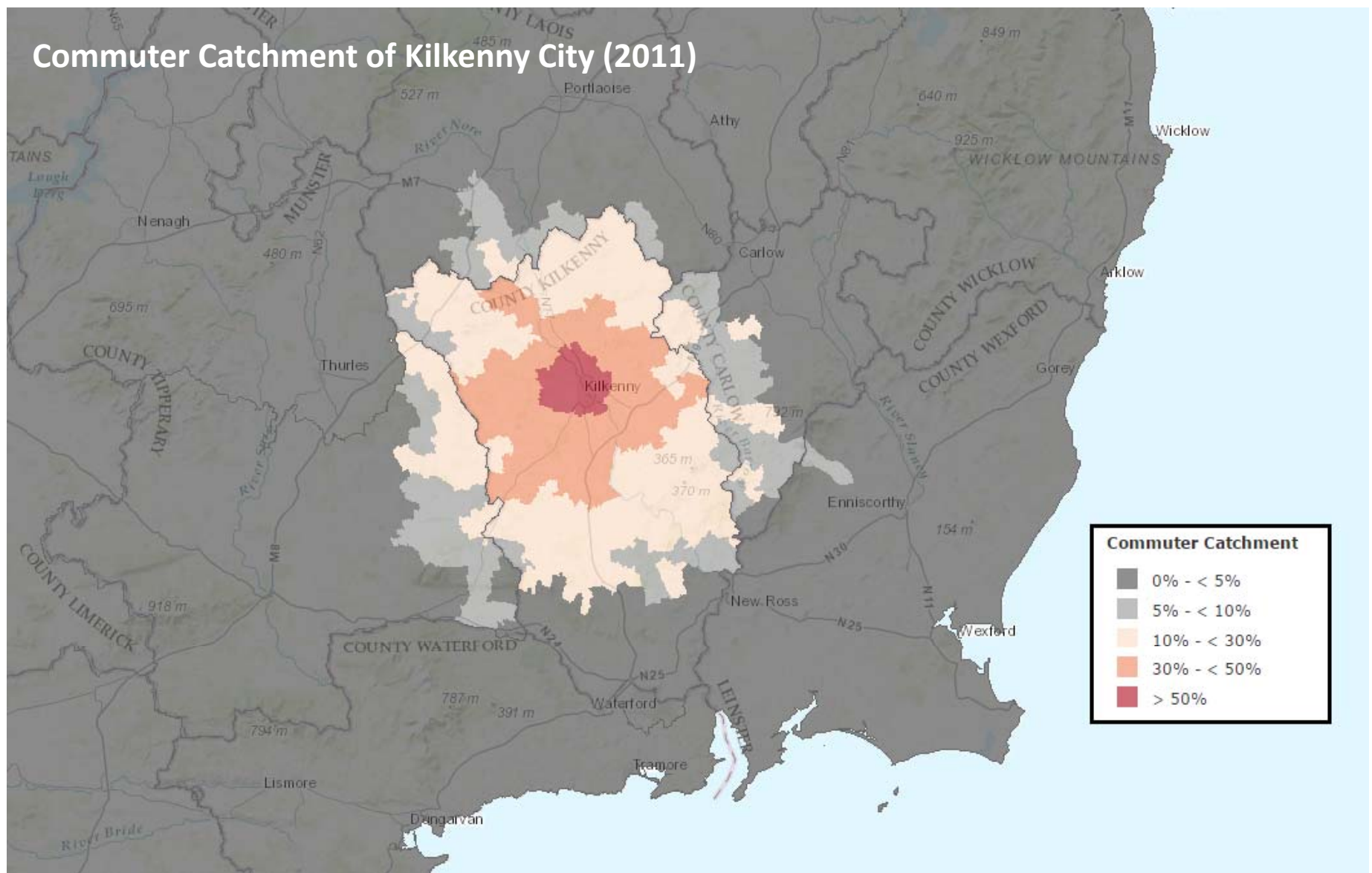
# Housing Vacancy Rate, 2016 (less Holiday Homes)

By Electoral Division (ED)





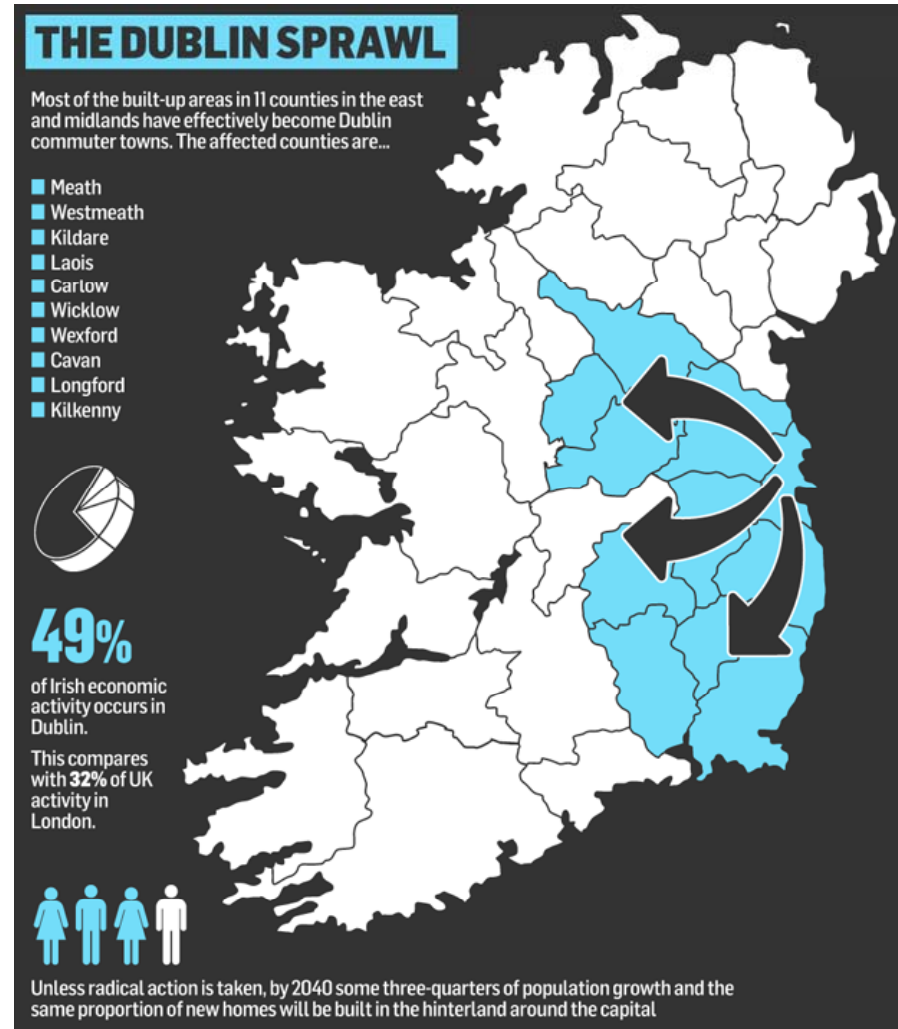
## Commuter Catchment of Kilkenny City (2011)



## Present Trends – ‘Business as Usual’

Continuation of present trends will result in:

- Three quarters of the extra population and new homes located on the eastern side of the country, clustered around Dublin
- Massive and increasingly unmanageable sprawl of housing, scattered employment and car-based commuting
- Under-utilised potential, congestion and adverse impacts on people's lives and the environment
- Harm to Ireland's broader development from an economic, social and environmental perspective



## Some Key Questions for the National Planning Framework

- What should Ireland look like in 20 years?
- Where will jobs be located and what will those jobs be?
- How might we promote one or more strong Regional Cities to act as a counter-balance to growth in the Dublin and the Mid-East?
- Where will we live and what type of housing will be needed?
- What key services will people need?
- What infrastructure is required – what are the national priorities?
- What are the planning response to key environmental challenges?
- How should a National Planning Framework be implemented?

## Where to next for the Regions?

Any **alternatives** will need to consider the following:-

- A more tailored approach to regional development as a one size fits all approach hasn't worked.
- Regions harnessing shared strengths, combining assets and providing co-ordination to improve regional performance.
- Strengthening cities and towns as drivers of growth for the all parts of the regions, both urban and rural.
- Aligning development with the need to transition to a sustainable, low carbon economy and society.

# What Happens Next?



- Publication of ***Issues and Choices Paper*** and commencement of initial public and stakeholder consultation from 2<sup>nd</sup> February to 12 noon on **16<sup>th</sup> March 2017**

Submissions can be made by post or electronically.  
Details available at:

[www.ireland2040.ie](http://www.ireland2040.ie)

- Draft NPF to be published for public and stakeholder consultation before the Summer
- Amended Draft for Oireachtas consideration in the Autumn
- Following publication of the Draft NPF the three Regional Assemblies will commence preparation of new **Regional Spatial and Economic Strategies** (RSEs), framed in light of the NPF and providing more detail to shape local planning and economic development in each local authority area.